

# GOVERNMENT COLLEGE ROPAR

(Affiliated To Punjabi University, Patiala)



## Criterion 7 –Institutional Values and Best Practices

**Q. 7.1.2. The Institution has facilities and initiatives for, 1. Alternate sources of energy and energy conservation measures, 2. Management of the various types of degradable and non-degradable waste, 3. Water conservation, 4. Green campus initiatives 5. Disabled-friendly, barrier free environment**

## Index

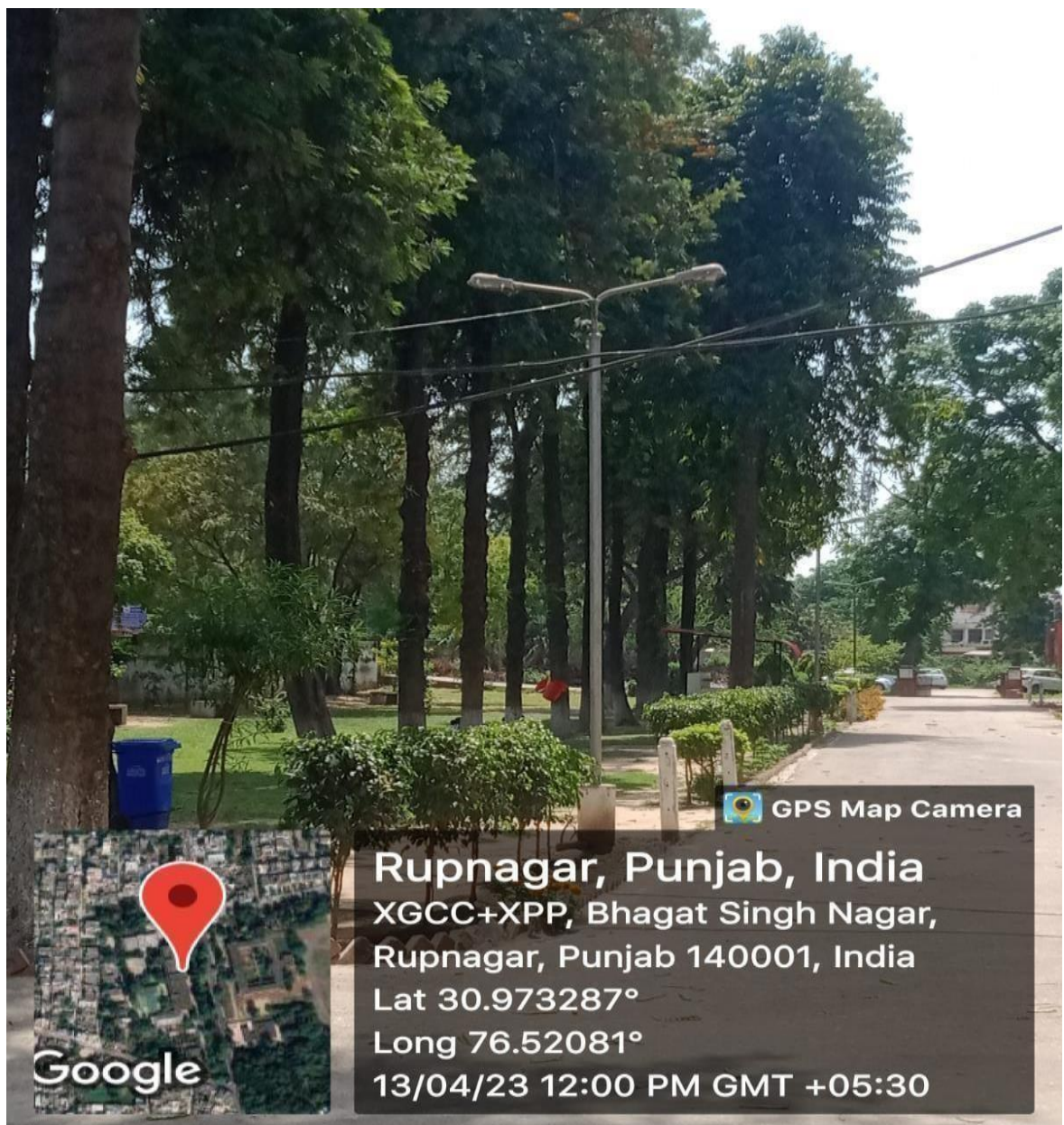
1. Alternate Sources of Energy and Energy Conservation Measures .....	1-4
2. Management of various types of degradable and non-degradable waste .....	5-10
3. Water Conservation facilities available in the institution:.....	11
4. Green Campus Initiatives .....	12-20
5. The institution has Divyangjan–friendly barrier freeenvironment:.....	21-24

## Geo Tagged Photographs of the facilities:

### 1. Alternate Sources of Energy and Energy Conservation Measures

#### Mercury Lights

Mercury lights offer energy-efficient illumination with a long lifespan, making them a cost-effective lighting solution.



Mercury Lights

## LED Bulbs: Energy Conservation

LED bulbs are a popular alternative to traditional incandescent bulbs because they are more energy-efficient and have a longer lifespan.



LED Bulb



## LED Tubes

- LED Tubes are a popular alternative to traditional incandescent bulbs because they are more energy-efficient and have a longer lifespan.



**LED Tube**

## Power Efficient AC



## Power Efficient AC

## 2. Management of various types of degradable and non-degradable waste

### Solid Waste Management

The primary purpose of dustbins is to collect and contain various types of waste materials, preventing litter and maintaining a clean environment.



### Dustbins

\*\* Red Dustbin: Red dustbins might be designated for non-recyclable general waste, often referred to as "landfill waste".

\*\* Blue Dustbin: Blue dustbins are commonly used for recycling materials such as paper, cardboard, glass, and certain types of plastics.



## Leaf Decomposer



**Before the establishment of leaf decomposer**

**After the establishment of leaf decomposer**

## Leaf Decomposer



**Leaf Decomposer**





**Leaf Decomposer**





**Solid waste Dumping Pit**



**Tyres are reused as plant-pots in Geography department**





Regular Cleanliness



Regular Cleanliness



## Liquid waste management



GPS Map Camera



**Rupnagar, Punjab, India**  
9, Bhagat Singh Nagar, Rupnagar,  
Punjab 140001, India  
Lat 30.973221°  
Long 76.520718°  
13/04/23 11:54 AM GMT +05:30

Utilization of waste water

### 3. Water Conservation facilities available in the institution:

#### Waste Water Recycling



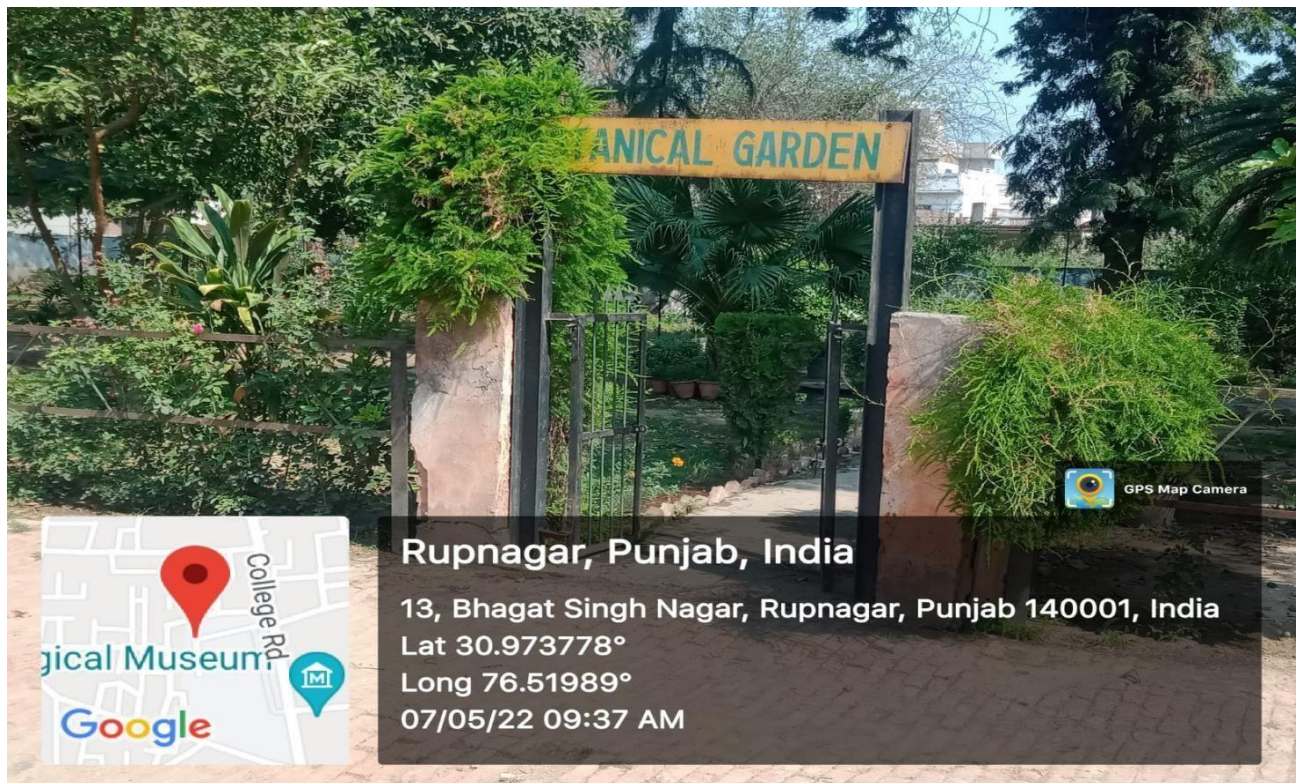
#### Waste Water collected in buckets



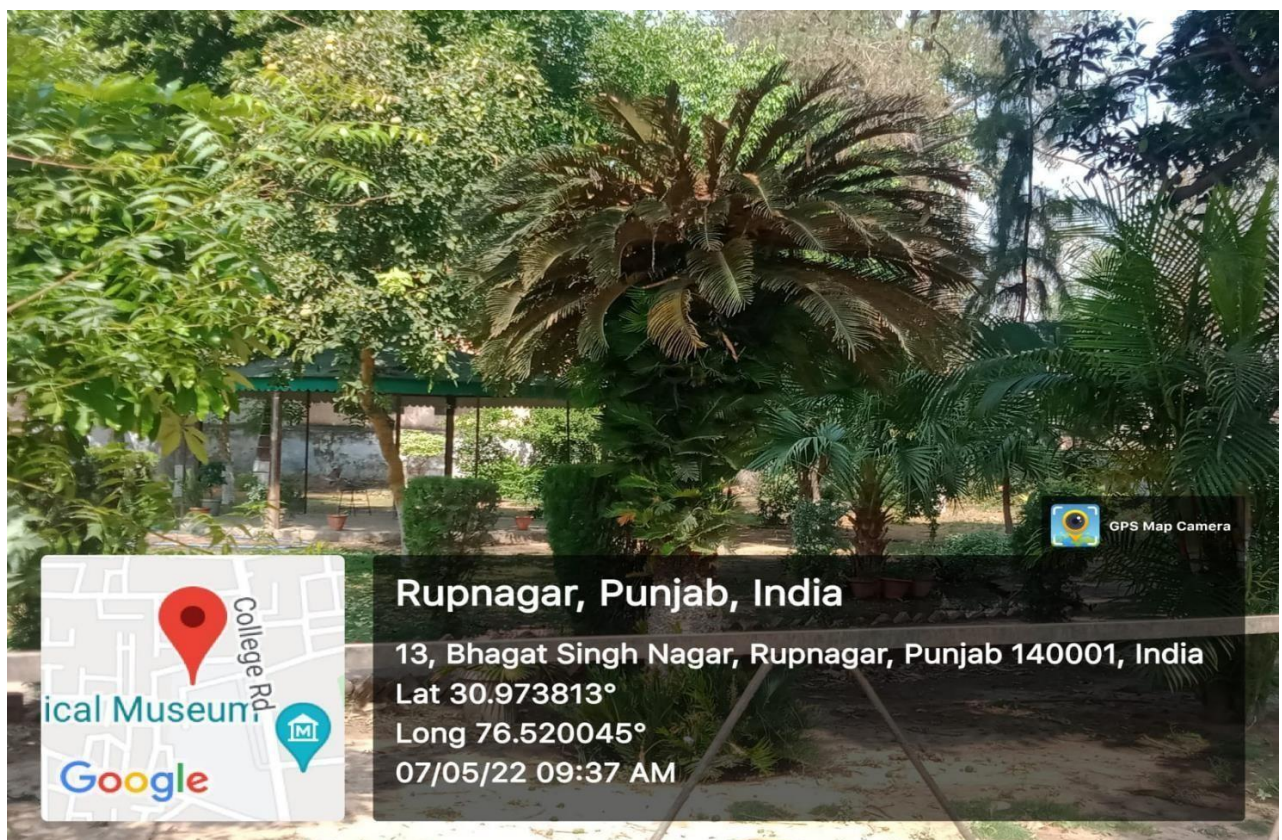
#### Utilization of waste water in the parks



#### 4. Green Campus Initiatives



**Botanical Garden at back side of college Library**

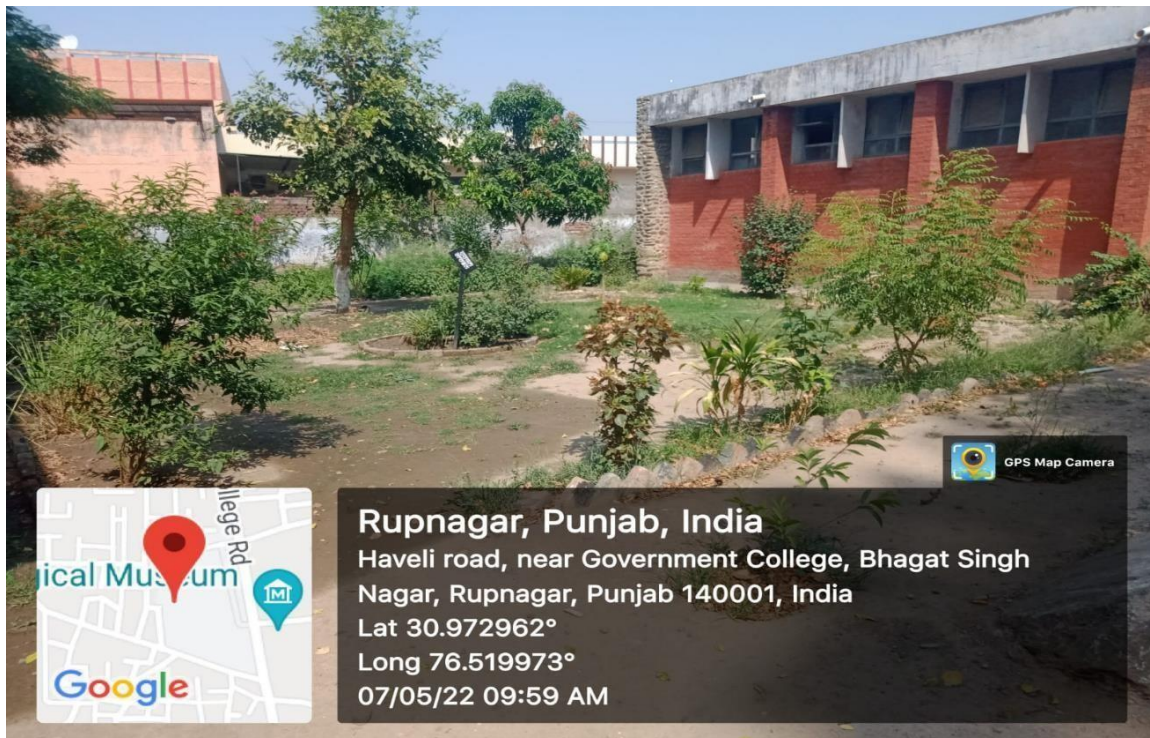


**Variety of Plants in the campus**





Variety of Plants



Herbal Garden at the backside of Geography Department



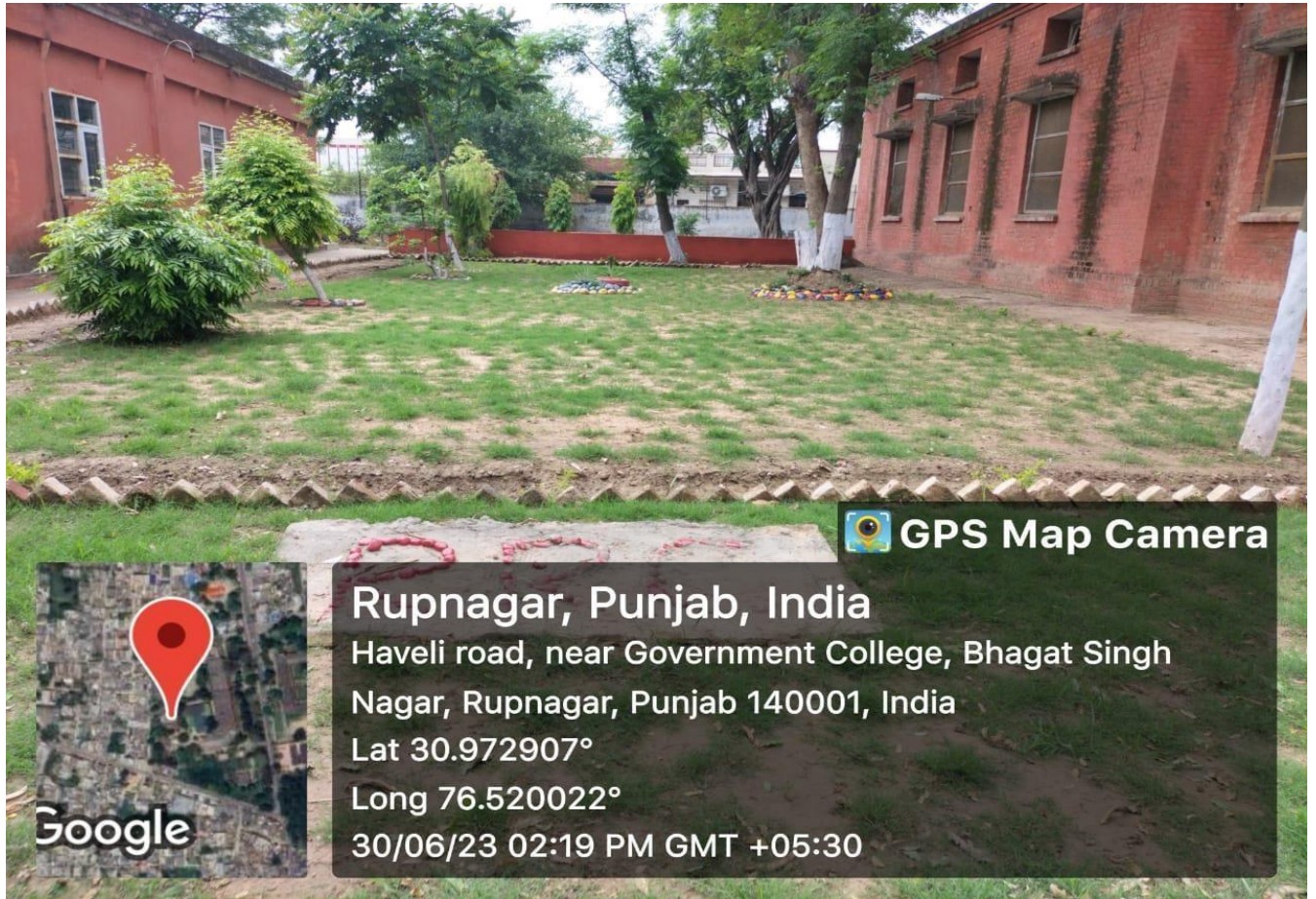


Variety of Trees in the college



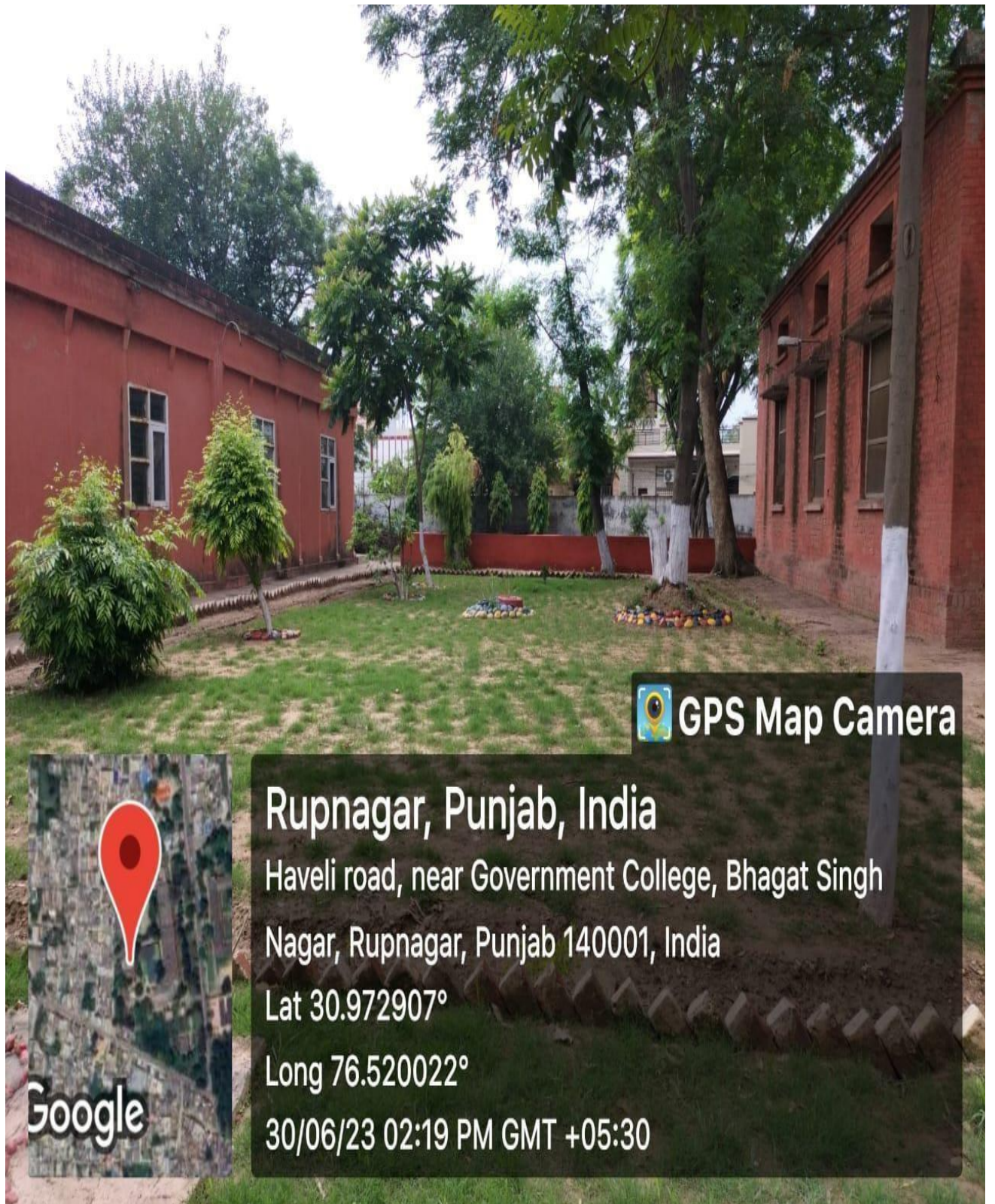
Wall Pictures promoting Green Life





**Green Initiative under Red Ribbon Club**





 **GPS Map Camera**

**Rupnagar, Punjab, India**

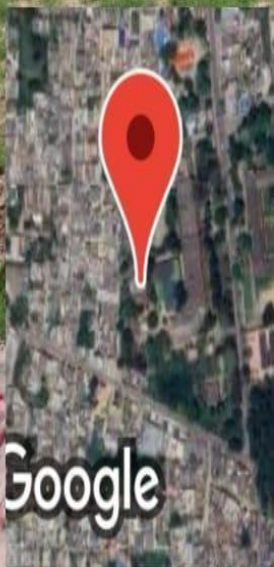
Haveli road, near Government College, Bhagat Singh

Nagar, Rupnagar, Punjab 140001, India

Lat 30.972907°

Long 76.520022°

30/06/23 02:19 PM GMT +05:30



**Green Initiative under Red Ribbon Club**





Promotion of Plastic Free Campus

Use of Bicycles



Promotion of use of Bicycles





Plantation Drive



Plantation Drive





Landscaping with Trees and Plants



Landscaping with Trees and Plants





**Water to plants through pipes**

5. The institution has Divyangjan–friendly barrier free environment:



**Ramp at the Computer Science Department**



**Ramps at the backside of Music Department**





**Ramp**



**Disabled friendly environment**